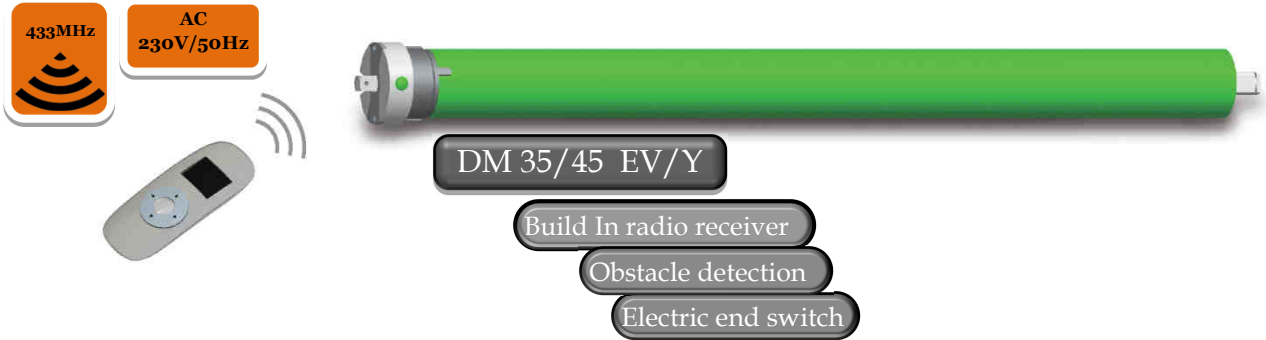


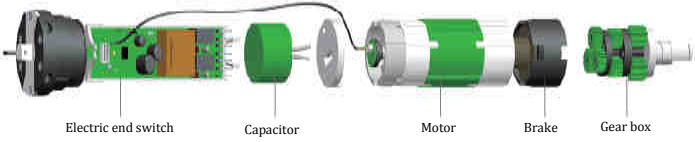
PROGRAMING MANUAL

Central Office, Production Plant:
ul. Warszawska 153, 43-300 Bielsko Biala, Polska
tel. +48 33 81 95 300, fax. +48 33 82 28 512

Production Plant:
ul. Goslawicka 3, 45-446 Opole, Polska
tel. +48 77 40 00 000, fax. +48 77 40 00 006
e-mail: Aluprof@aluprof.eu

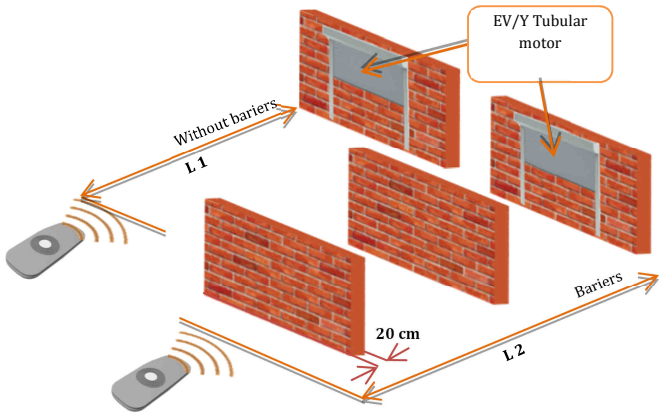


Technical specifications



1. Setting the tubular motor by a transmitter.
2. Ability to store up to 20 channels in one tubular motor. Each next channel will erase the first one.
3. Electronic end switch, with the possibility to program the third limit "comfort position".
4. Obstacle detection.
5. Audio and moment indication when programming the tubular motor

The distance ranges of portable transmitters correct response



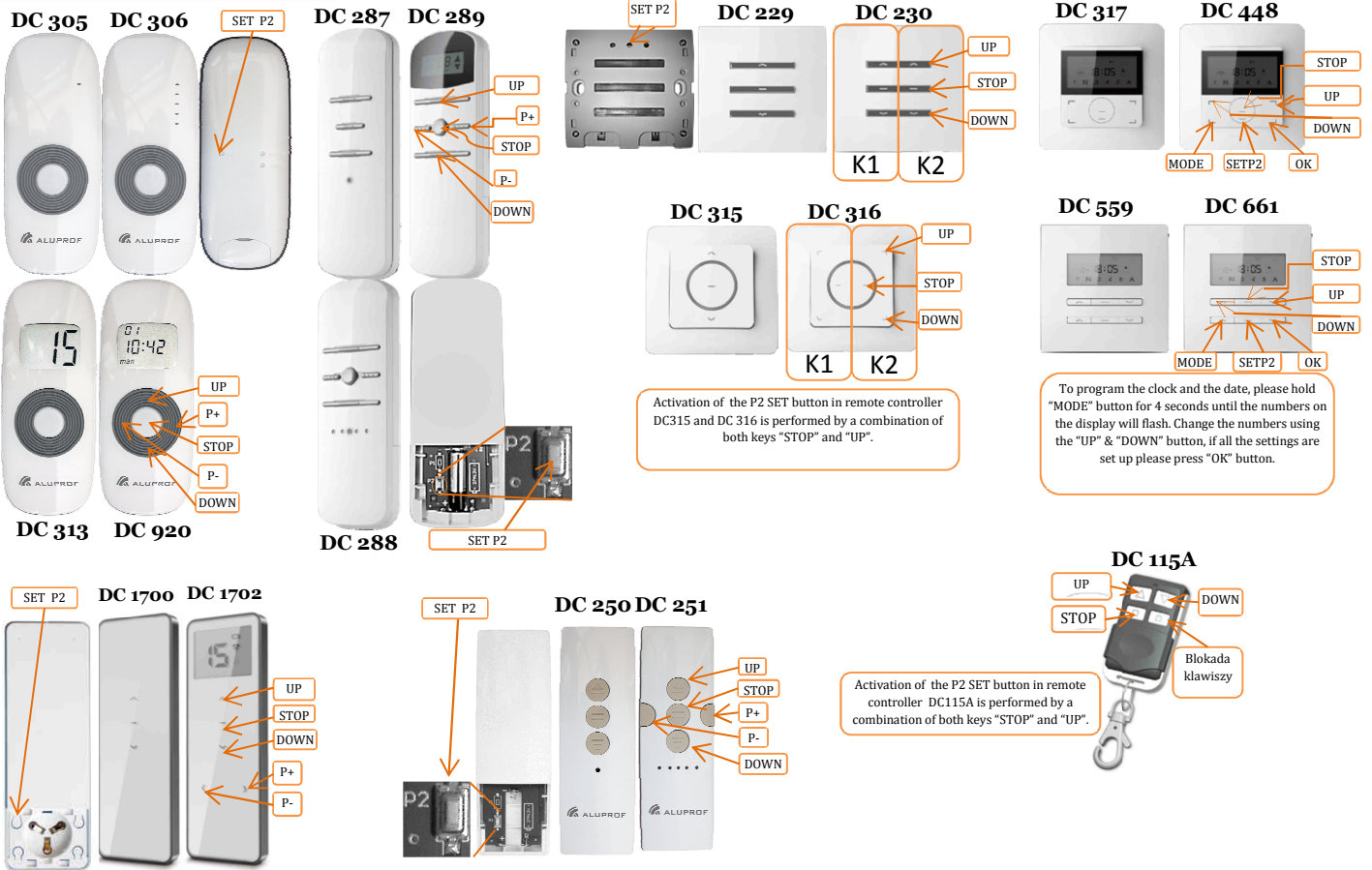
| | L1 | L 2 | Radio frequent |
|-----------|------|-----|----------------|
| 230V/50Hz | 200m | 35m | 433.92 MHz |

⚠ Attention ⚠

Tubular motor with obstacle detection, if programmed in auto mode, should be used with:



Remote controllers description



Activation of the P2 SET button in remote controller DC315 and DC 316 is performed by a combination of both keys "STOP" and "UP".

To program the clock and the date, please hold "MODE" button for 4 seconds until the numbers on the display will flash. Change the numbers using the "UP" & "DOWN" button, if all the settings are set up please press "OK" button.

Activation of the P2 SET button in remote controller DC115A is performed by a combination of both keys "STOP" and "UP".

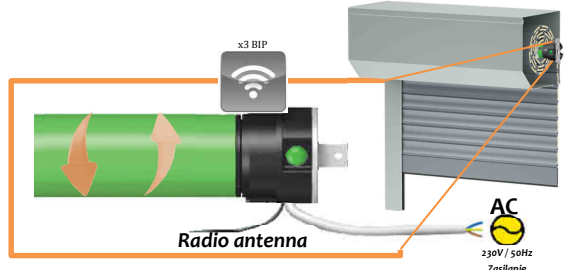
LEGEND :
UP - activation of this button will move roller shutter up
DOWN - activation of this button will move roller shutter down
SET P2 - activation of this button will bring the tubular motor in to programming
P+ - activation of this button will switch to the next channel
P- - activation of this button will switch to the previous channel.
K1 -channel one buttons
K2 -channel two buttons
MODE - setting up of time and date button

1/ Electrical connections (Fig. 1)

After connecting the tubular motor to the power supply, 3 beeps will be heard immediately (3x BIP), and if he contains a remote controller in the memory he will make a short movement up and down.

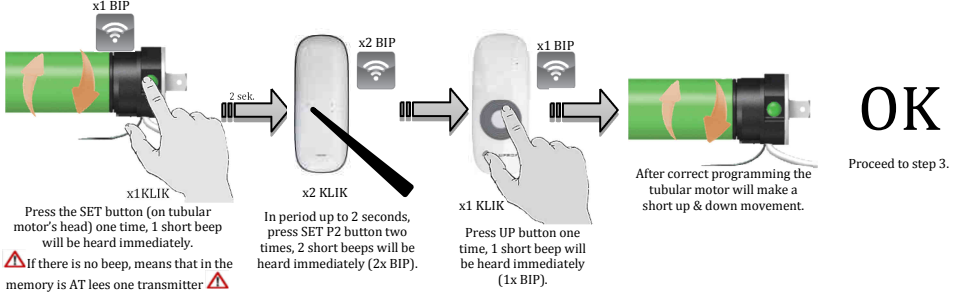


Fig. 1



2/ Memorizing the first transmitter

To memorize the first transmitter:



3/ Memorizing additional transmitter

Press SET P2 button of the old transmitter two times, 2 short beeps will be heard immediately (2x BIP).

B(+n)
In period up to 3 second press SET P2 button of the new transmitter one time.

After correct programming the tubular motor will make a short up & down movement.

Each next transmitter can be added by the old transmitters.

A + B + n
In each tubular motor can be stored up to 20 transmitters.

4/ Programming the direction of movement.

After the transmitter has been memorized, and pressing the "UP" or "DOWN" button the tubular motor performs the movement opposed to the indicated we should:

Hold the button till the tubular motor will make a short up & down movement.

When pressing the „UP“ button, the roller shutter goes up.

Proceed to step 4.

5/ Programming the limit-switches.

The limit-switches can be programmed in three different ways :

- A- MANUAL (opening position, closing position, medium position),
- B- AUTOMATIC (opening position, closing position),
- C- AUTOMATIC with self test mode

Getting into set-up mode :

Press SET P2 button one time, 1 short beep will be heard immediately (1x BIP).

Press UP button one time, 1 short beep will be heard immediately (1x BIP).

Press SET P2 button one time, 1 short beep will be heard immediately (1x BIP).

After correct programming the tubular motor will make a short up & down movement.

Chose the type of limit-switch programming.

A- MANUAL:

Opening position:

Press "UP" button one time, and wait till the shutter reach the required position.

When the required opening position is reached press "STOP" button for 6 second.

After correct programming the tubular motor will make a short up & down movement.

Proceed to the next step.

Closing position:

Press "DOWN" button one time, and wait till the shutter reach the required position.

When the required closing position is reached press "STOP" button for 6 second.

After correct programming the tubular motor will make a short up & down movement.

After finish the limit-switch setting up the motors goes automatically out from the set-up mode.

Third limit (medium position):

Before the medium position programming, the opening and closing position should be already programmed. You don't need to be into set-up mode.

Using buttons „UP“ and „DOWN“ set the required position medium position.

When the required closing position is reached press "STOP" button for 6 second.

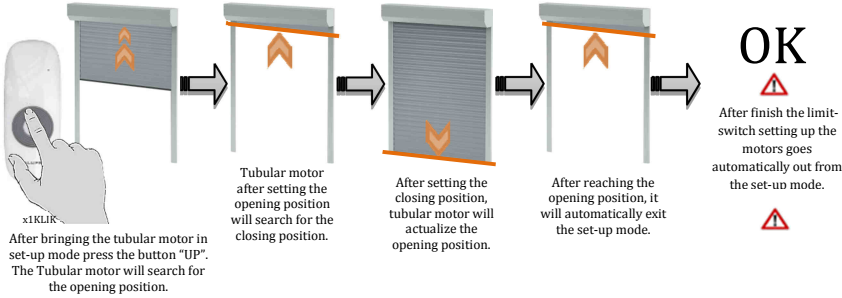
After correct programming the tubular motor will make a short up & down movement.

After finish the limit-switch setting up the motors goes automatically out from the set-up mode.

If you want use the medium position, you should press the STOP button till the roller shutter starts to moving up or down to the programmed position.

B- Automatic:

⚠ To set the limit-switch in automatic mode up, it's necessary to use the security springs & side locks or stoppers. ⚠

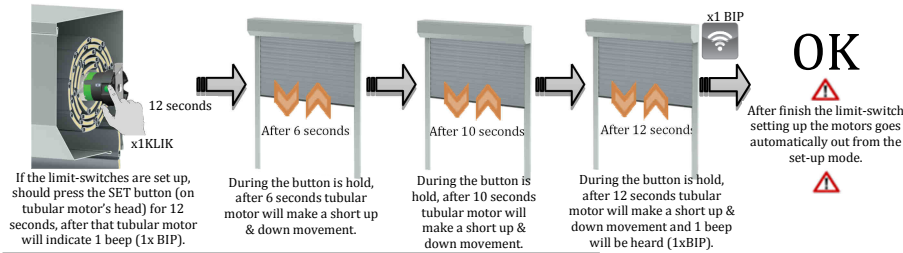


C- Automatic with self test mode:

Main function in self test mode is that the motor test the limit switch every 30 cycles.

⚠ To set the limit-switch in automatic mode up, it's necessary to use the security springs & side locks or stoppers.

For this function to be fully operatable must first set the limit-switch according to the manual 5A or 5B and then: ⚠



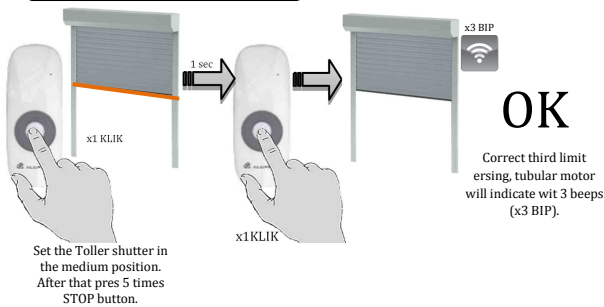
6/ Erasing the third limit (medium position) &/or limit-switches.

A- erasing medium position,

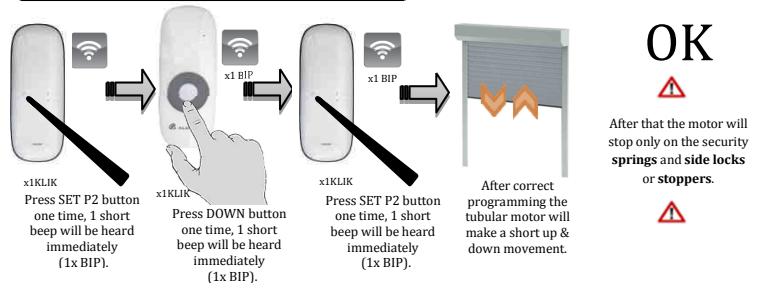
B- erasing all positions

⚠ Jednorazowe wykonanie procedury kasowania pozycji krańcowych powoduje wykasowanie wszystkich wcześniej ustalonych pozycji zatrzymywania się pancerza. ⚠

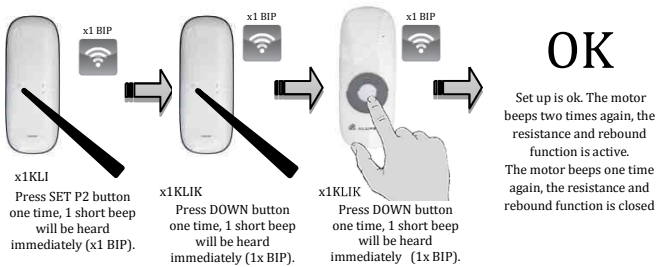
A- Erasing medium position:



B- Erasing limit-switch and medium position:



7/ The resistance and rebound function .



8/ Erasing the memory.

⚠ This procedure is erasing the whole memory from the motor including end positions, medium position and all remote controllers. ⚠

